

Capetown SR-830-65°



Light Output Ratio:	100.0%	
Luminaire Power:	4.222 W	
SHR Nominal:	0.00	Calculated using the TM5
SHR Maximum:	1.00	fine grid method.

C Range: 0 - 360DEG
C Interval: 15.0DEG
Test Speed: HIGH
Temperature: 25.3DEG
Operators: Jason
Test Date: 2020-06-09

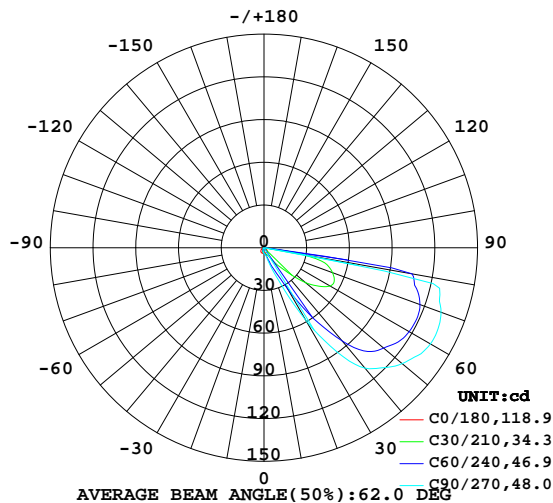
γ Range: 0 - 90DEG
γ Interval: 1.0DEG
Test System: EVERFINE GO-2000B_V1 SYSTEM V2.0.362
Humidity: 58%
Test Distance: 5.850m [K=1.0000]
Remarks:

LUMINAIRE PHOTOMETRIC TEST REPORT

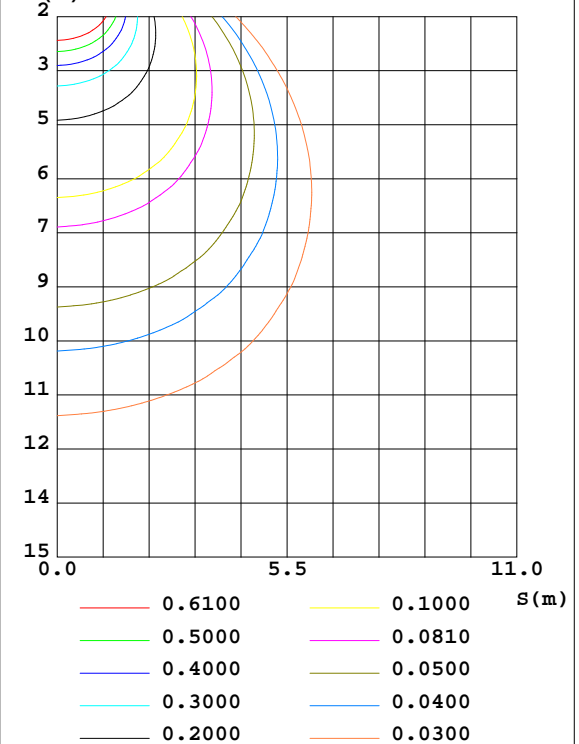
Test:U:221.0V I:0.0440A P:4.222W PF:0.4338 Freq:60.08Hz Lamp Flux:162.033x1 lm		
NAME: Capetown SR-830-65°	TYPE: Recessed Ground Light	SERIAL No.:
SPEC.: 3000K	DIM.: L115mm*L115mm*H37mm	
MFR.: NEKO LIGHTING AG		

DATA OF LAMP		PHOTOMETRIC DATA				Eff: 38.38 lm/W
MODEL	3000K	I _{max} (cd)	135.3	S/MH(C0/180)	1.43	
NOMINAL POWER(W)	6	LOR(%)	100.0	S/MH(C90/270)	0.60	
RATED VOLTAGE(V)	220	TOTAL FLUX(lm)	162.03	η UP,DN(C0-180)	0.0,97.9	
NOMINAL FLUX(lm)	162.033	CIE CLASS	DIRECT	η UP,DN(C180-360)	0.0,2.1	
LAMPS INSIDE	1	η up(%)	0.0	CIBSE SHR NOM	0.00	
TEST VOLTAGE(V)	220	η down(%)	100.0	CIBSE SHR MAX	1.00	

LUMINOUS INTENSITY DISTRIBUTION DIAGRAM



C0 PLANE ISOLUX DIAGRAM (UNIT:lx)



C Range: 0 - 360DEG
C Interval: 15.0DEG
Test Speed: HIGH
Temperature:25.3DEG
Operators:Jason
Test Date:2020-06-09

γ Range: 0 - 90DEG
γ Interval: 1.0DEG
Test System:EVERFINE GO-2000B_V1 SYSTEM V2.0.362
Humidity:58%
Test Distance:5.850m [K=1.0000]
Remarks:

ZONAL FLUX DIAGRAM

ZONAL FLUX DIAGRAM:

γ	C0	C45	C90	C135	C180	C225	C270	C315	γ	Φ zone	Φ total	%lum, lamp
10	3.960	4.534	5.000	4.628	4.049	3.309	3.002	3.262	0- 10	0.3792	0.3792	0.23,0.23
20	3.924	5.863	14.34	6.234	4.029	2.348	2.061	2.337	10- 20	1.221	1.600	0.99,0.99
30	3.754	17.41	59.16	21.32	3.878	1.875	1.489	1.896	20- 30	4.048	5.648	3.49,3.49
40	3.376	50.44	110.4	61.23	3.498	1.345	1.051	1.371	30- 40	13.60	19.25	11.9,11.9
50	2.775	86.35	126.7	92.37	2.834	0.9266	0.7467	0.9732	40- 50	25.94	45.19	27.9,27.9
60	1.981	95.12	135.0	99.83	1.992	0.6126	0.5015	0.6656	50- 60	35.49	80.68	49.8,49.8
70	1.120	93.00	132.3	96.98	1.166	0.3772	0.3132	0.4218	60- 70	40.48	121.2	74.8,74.8
80	0.3586	72.62	29.04	47.44	0.2629	0.2507	0.2640	0.2856	70- 80	37.68	158.8	98,98
90	0.1079	0.0719	0.1117	0.0681	0.0755	0.1983	0.2892	0.2416	80- 90	3.194	162.0	100,100
100									90-100			
110									100-110			
120									110-120			
130									120-130			
140									130-140			
150									140-150			
160									150-160			
170									160-170			
180									170-180			
DEG	LUMINOUS INTENSITY:cd									UNIT:lm		

Conical surface Flux(90deg): 30.816 lm

%lum = 19.0%

%lamp = 19.0%

Conical surface Flux(120deg): 80.676 lm

%lum = 49.8%

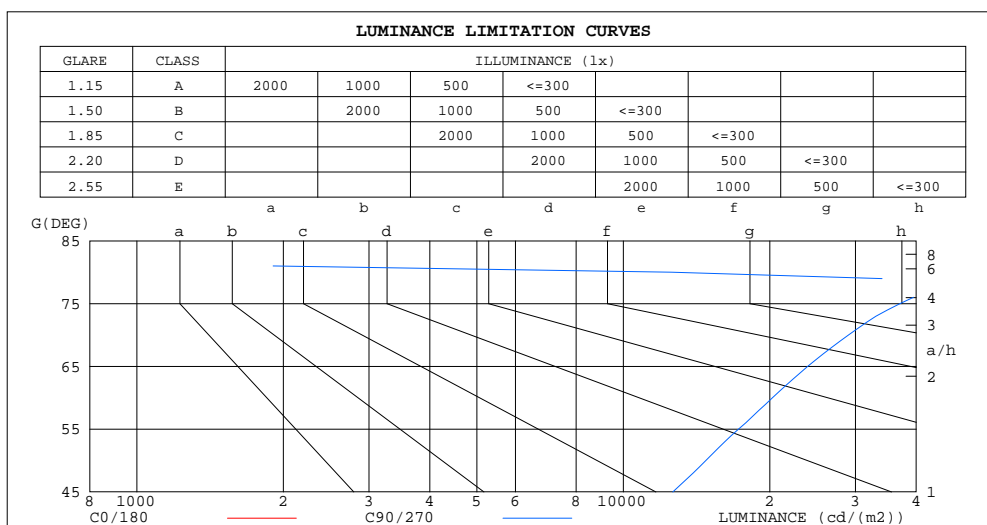
%lamp = 49.8%

C Range: 0 - 360DEG
C Interval: 15.0DEG
Test Speed: HIGH
Temperature:25.3DEG
Operators:Jason
Test Date:2020-06-09

γ Range: 0 - 90DEG
 γ Interval: 1.0DEG
Test System:EVERFINE GO-2000B_V1 SYSTEM V2.0.362
Humidity:58%
Test Distance:5.850m [K=1.0000]
Remarks:

LUMINANCE LIMITATION CURVES

Test:U:221.0V I:0.0440A P:4.222W PF:0.4338 Freq:60.08Hz Lamp Flux:162.033x1 lm		
NAME: Capetown SR-830-65°	TYPE: Recessed Ground Light	SERIAL No.:
SPEC.: 3000K	DIM.: L115mm*L115mm*H37mm	
MFR.: NEKO LIGHTING AG		



LUMINANCE cd/(m2)		
G(DEG)	C0/180	C90/270
85	198	303
80	157	12547
75	204	37073
70	250	29034
65	279	23936
60	302	20263
55	318	17253
50	329	14790
45	334	12639

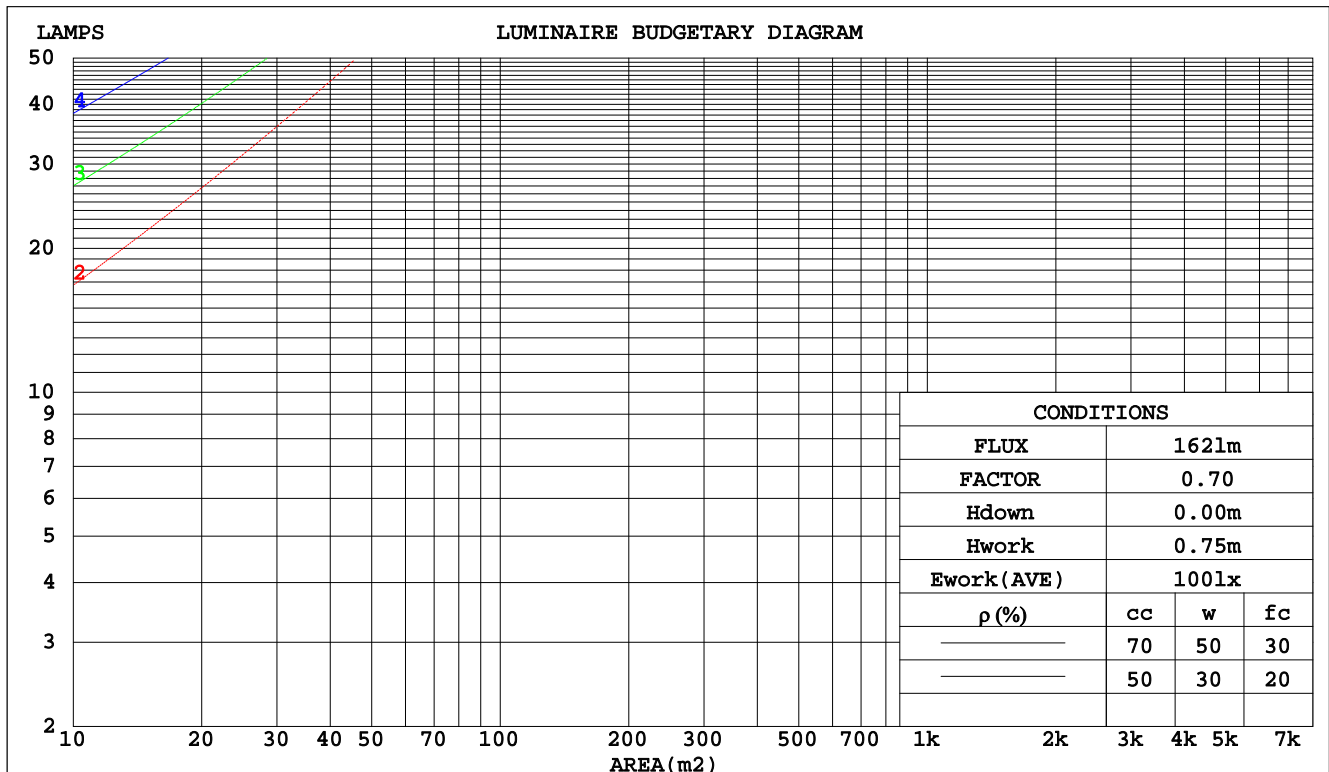
C Range: 0 - 360DEG
C Interval: 15.0DEG
Test Speed: HIGH
Temperature: 25.3DEG
Operators: Jason
Test Date: 2020-06-09

γ Range: 0 - 90DEG
γ Interval: 1.0DEG
Test System: EVERFINE GO-2000B_V1 SYSTEM V2.0.362
Humidity: 58%
Test Distance: 5.850m [K=1.0000]
Remarks:

CU AND LUMINAIRE BUDGETARY ESTIMATE DIAGRAM

Test:U:221.0V I:0.0440A P:4.222W PF:0.4338 Freq:60.08Hz Lamp Flux:162.033x1 lm		
NAME: Capetown SR-830-65°	TYPE: Recessed Ground Light	SERIAL No.:
SPEC.: 3000K	DIM.: L115mm*L115mm*H37mm	
MFR.: NEKO LIGHTING AG		

pcc	80%			70%			50%			30%			10%			0
pw	50%	30%	10%	50%	30%	10%	50%	30%	10%	50%	30%	10%	50%	30%	10%	0
pfc	20%			20%			20%			20%			20%			0
RCR	RCR:Room Cavity Ratio						Coefficients of Utilization(CU)									
0.0	1.19	1.19	1.19	1.16	1.16	1.16	1.11	1.11	1.11	1.06	1.06	1.06	1.02	1.02	1.02	1.00
1.0	.97	.91	.85	.95	.89	.84	.90	.85	.81	.86	.82	.79	.82	.79	.76	.74
2.0	.78	.69	.60	.76	.67	.60	.72	.65	.58	.69	.62	.57	.65	.60	.55	.53
3.0	.64	.53	.44	.62	.52	.44	.59	.50	.43	.56	.48	.42	.53	.47	.41	.38
4.0	.54	.42	.33	.52	.41	.33	.49	.40	.32	.47	.38	.32	.44	.37	.31	.28
5.0	.46	.34	.26	.45	.34	.26	.42	.33	.25	.40	.31	.25	.38	.30	.24	.22
6.0	.40	.28	.20	.39	.28	.20	.37	.27	.20	.35	.26	.20	.33	.25	.19	.17
7.0	.35	.24	.17	.34	.24	.16	.32	.23	.16	.31	.22	.16	.29	.22	.16	.13
8.0	.31	.21	.14	.30	.20	.14	.29	.20	.13	.27	.19	.13	.26	.19	.13	.11
9.0	.28	.18	.11	.27	.18	.11	.26	.17	.11	.25	.17	.11	.23	.16	.11	.09
10.0	.25	.16	.10	.25	.16	.10	.23	.15	.09	.22	.15	.09	.21	.14	.09	.07



C Range: 0 - 360DEG
C Interval: 15.0DEG
Test Speed: HIGH
Temperature: 25.3DEG
Operators: Jason
Test Date: 2020-06-09

γ Range: 0 - 90DEG
γ Interval: 1.0DEG
Test System: EVERFINE GO-2000B_V1 SYSTEM V2.0.362
Humidity: 58%
Test Distance: 5.850m [K=1.0000]
Remarks:

WEC AND CCEC

Test:U:221.0V I:0.0440A P:4.222W PF:0.4338 Freq:60.08Hz Lamp Flux:162.033x1 lm		
NAME: Capetown SR-830-65°	TYPE: Recessed Ground Light	SERIAL No.:
SPEC.: 3000K	DIM.: L115mm*L115mm*H37mm	
MFR.: NEKO LIGHTING AG		

pcc	80%			70%			50%			30%			10%			0	
pw	50%	30%	10%	50%	30%	10%	50%	30%	10%	50%	30%	10%	50%	30%	10%	0	
pfc	20%			20%			20%			20%			20%			0	
RCR	RCR:Room Cavity Ratio						Wall Exitance Coefficients(WEC)										
0.0																	
1.0	.442	.251	.080	.434	.248	.079	.420	.241	.077	.407	.235	.075	.396	.229	.074		
2.0	.409	.224	.069	.403	.222	.068	.390	.217	.067	.378	.212	.066	.367	.208	.065		
3.0	.367	.195	.059	.361	.193	.058	.350	.189	.058	.339	.186	.057	.329	.182	.056		
4.0	.328	.171	.050	.323	.169	.050	.313	.166	.050	.303	.163	.049	.294	.160	.049		
5.0	.295	.150	.044	.290	.149	.043	.281	.146	.043	.273	.144	.043	.265	.141	.043		
6.0	.267	.134	.038	.263	.133	.038	.255	.131	.038	.247	.128	.038	.240	.126	.038		
7.0	.244	.121	.034	.240	.120	.034	.233	.118	.034	.226	.116	.034	.219	.114	.034		
8.0	.224	.109	.031	.220	.108	.031	.214	.107	.031	.208	.105	.030	.202	.104	.030		
9.0	.207	.100	.028	.203	.099	.028	.198	.098	.028	.192	.096	.028	.187	.095	.027		
10.0	.192	.092	.026	.189	.091	.025	.184	.090	.025	.179	.089	.025	.174	.088	.025		

pcc	80%			70%			50%			30%			10%			0
pw	50%	30%	10%	50%	30%	10%	50%	30%	10%	50%	30%	10%	50%	30%	10%	0
pfc	20%			20%			20%			20%			20%			0
RCR	RCR:Room Cavity Ratio						Ceiling Cavity Exitance Coefficients(CCEC)									
0.0	.190	.190	.190	.163	.163	.163	.111	.111	.111	.064	.064	.064	.020	.020	.020	
1.0	.189	.155	.124	.162	.133	.107	.111	.092	.074	.064	.053	.043	.020	.017	.014	
2.0	.188	.131	.084	.161	.113	.072	.110	.078	.051	.064	.046	.030	.020	.015	.010	
3.0	.183	.115	.061	.157	.099	.052	.108	.069	.037	.062	.040	.022	.020	.013	.007	
4.0	.176	.103	.047	.151	.089	.040	.104	.062	.028	.060	.036	.017	.019	.012	.006	
5.0	.169	.093	.037	.145	.081	.033	.100	.056	.023	.058	.033	.014	.019	.011	.005	
6.0	.160	.085	.031	.138	.074	.027	.095	.052	.019	.055	.030	.011	.018	.010	.004	
7.0	.152	.079	.027	.131	.068	.024	.091	.048	.017	.053	.028	.010	.017	.009	.003	
8.0	.145	.073	.024	.125	.063	.021	.086	.044	.015	.050	.026	.009	.016	.009	.003	
9.0	.137	.068	.021	.118	.059	.019	.082	.042	.013	.048	.025	.008	.015	.008	.003	
10.0	.130	.064	.019	.112	.055	.017	.078	.039	.012	.045	.023	.007	.015	.008	.002	

C Range: 0 - 360DEG
C Interval: 15.0DEG
Test Speed: HIGH
Temperature: 25.3DEG
Operators: Jason
Test Date: 2020-06-09

γ Range: 0 - 90DEG
γ Interval: 1.0DEG
Test System: EVERFINE GO-2000B_V1 SYSTEM V2.0.362
Humidity: 58%
Test Distance: 5.850m [K=1.0000]
Remarks:

UGR(Unified Glare Rating) Table

Test:U:221.0V I:0.0440A P:4.222W PF:0.4338 Freq:60.08Hz Lamp Flux:162.033x1 lm										
NAME: Capetown SR-830-65°					TYPE: Recessed Ground Light			SERIAL No.:		
SPEC.: 3000K					DIM.: L115mm*L115mm*H37mm					
MFR.: NEKO LIGHTING AG										
ceiling/cavity	0.7	0.7	0.5	0.5	0.3	0.7	0.7	0.5	0.5	0.3
walls	0.5	0.3	0.5	0.3	0.3	0.5	0.3	0.5	0.3	0.3
working plane	0.2	0.2	0.2	0.2	0.2	0.2	0.2	0.2	0.2	0.2
Room dimensions	Viewed crosswise					Viewed endwise				
x = 2H y = 2H	24.9	26.9	25.2	27.1	27.3	34.2	36.2	34.5	36.4	36.7
3H	25.6	27.5	26.0	27.8	28.0	37.7	39.5	38.0	39.8	40.1
4H	25.8	27.6	26.1	27.9	28.1	39.5	41.3	39.8	41.5	41.8
6H	25.8	27.5	26.2	27.8	28.1	40.9	42.6	41.3	42.9	43.2
8H	25.7	27.4	26.1	27.7	28.0	40.9	42.5	41.2	42.8	43.1
12H	25.7	27.3	26.1	27.6	27.9	40.8	42.4	41.2	42.7	43.0
4H 2H	30.2	31.9	30.5	32.2	32.5	34.8	36.6	35.1	36.8	37.1
3H	31.6	33.2	32.0	33.5	33.9	38.6	40.1	38.9	40.5	40.8
4H	32.1	33.6	32.5	33.9	34.3	40.6	42.0	41.0	42.4	42.8
6H	32.2	33.5	32.6	33.9	34.3	42.3	43.6	42.7	44.0	44.4
8H	32.2	33.4	32.6	33.8	34.2	42.3	43.5	42.7	43.9	44.3
12H	32.1	33.2	32.6	33.6	34.1	42.2	43.4	42.7	43.8	44.2
8H 4H	35.5	36.7	35.9	37.1	37.5	41.0	42.2	41.4	42.6	43.0
6H	35.9	37.0	36.4	37.4	37.8	43.0	44.1	43.5	44.5	44.9
8H	35.9	36.8	36.4	37.3	37.7	43.0	44.0	43.5	44.4	44.8
12H	35.9	36.7	36.4	37.2	37.6	43.0	43.8	43.5	44.3	44.7
12H 4H	36.3	37.4	36.7	37.8	38.2	41.0	42.1	41.4	42.5	42.9
6H	37.0	37.9	37.4	38.3	38.8	43.1	44.0	43.6	44.4	44.9
8H	37.0	37.8	37.5	38.2	38.7	43.1	43.9	43.6	44.3	44.8
Variations with the observer position at spacings:										
S = 1.0H	+ 0.1 / - 0.1					+ 0.1 / - 0.1				
1.5H	+ 0.1 / - 0.1					+ 0.1 / - 0.3				
2.0H	+ 0.5 / - 0.5					+ 0.8 / - 0.6				

CIE Pub.117, 162.0 lm Total Lamp Luminous Flux Correct ($8\log(F/F_0) = -6.3$)

C Range: 0 - 360DEG
C Interval: 15.0DEG
Test Speed: HIGH
Temperature: 25.3DEG
Operators: Jason
Test Date: 2020-06-09

γ Range: 0 - 90DEG
 γ Interval: 1.0DEG
Test System: EVERFINE GO-2000B_V1 SYSTEM V2.0.362
Humidity: 58%
Test Distance: 5.850m [K=1.0000]
Remarks:

UTILIZATION FACTORS TABLE

Test:U:221.0V I:0.0440A P:4.222W PF:0.4338 Freq:60.08Hz Lamp Flux:162.033x1 lm		
NAME: Capetown SR-830-65°	TYPE: Recessed Ground Light	SERIAL No.:
SPEC.: 3000K	DIM.: L115mm*L115mm*H37mm	
MFR.: NEKO LIGHTING AG		

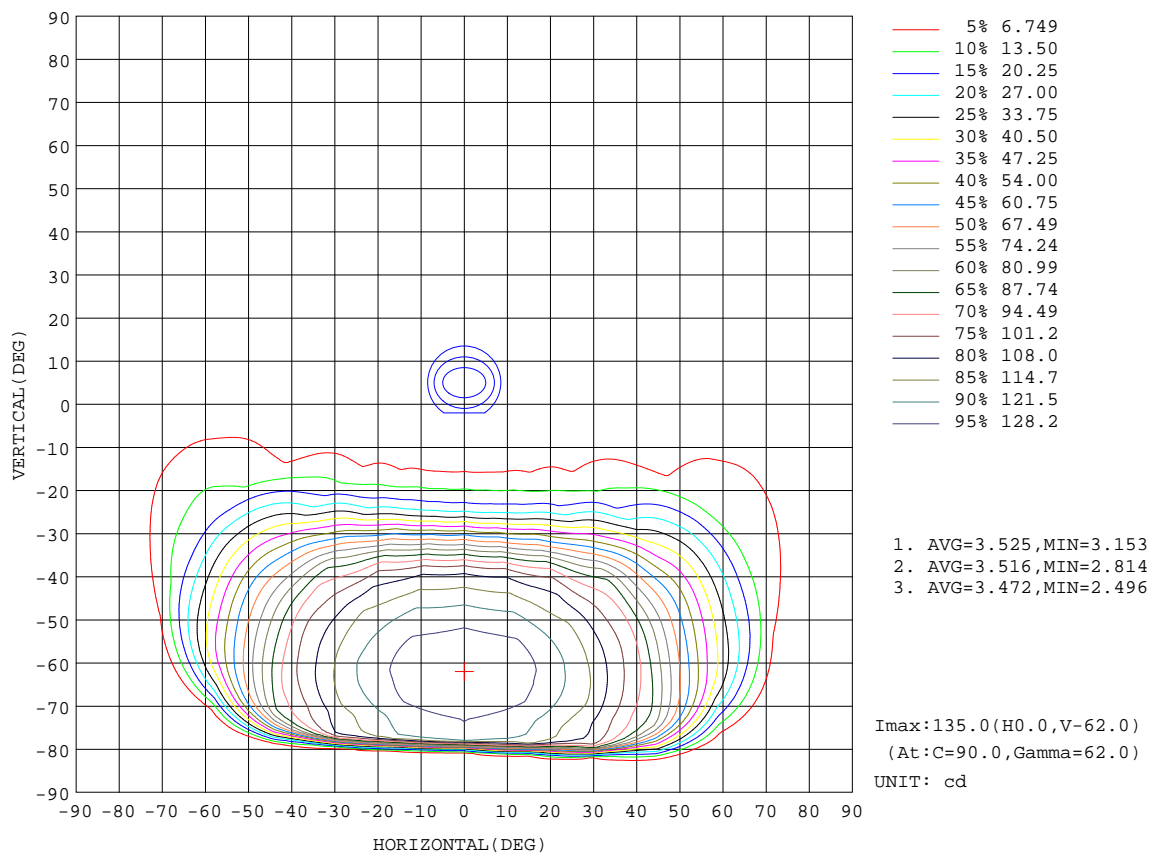
REFLECTANCE										
Ceiling	0.8	0.8	0.8	0.7	0.7	0.7	0.5	0.5	0.5	0
Walls	0.7	0.5	0.3	0.7	0.5	0.3	0.7	0.5	0.3	0
Working plane	0.2	0.2	0.2	0.2	0.2	0.2	0.2	0.2	0.2	0
ROOM INDEX	UTILIZATION FACTORS(PERCENT) $k(RI) \times RCR = 5$									
$k = 0.60$	40	25	16	39	25	16	37	24	16	7
0.80	49	34	24	48	33	24	46	32	23	14
1.00	58	43	32	56	42	32	54	44	32	22
1.25	66	51	41	64	50	41	61	49	40	30
1.50	73	58	48	71	57	47	67	55	46	36
2.00	82	70	60	80	68	59	76	66	58	47
2.50	88	77	68	86	75	67	81	72	65	55
3.00	93	83	75	91	81	74	86	78	72	61
4.00	99	91	84	97	89	83	92	86	80	70
5.00	103	96	90	101	94	89	96	90	86	75
ROOM INDEX	UF(total)									Direct
According to DIN EN 13032-2 2004			Suspended					SHRNOM = 1.25		

C Range: 0 - 360DEG
 C Interval: 15.0DEG
 Test Speed: HIGH
 Temperature: 25.3DEG
 Operators: Jason
 Test Date: 2020-06-09

γ Range: 0 - 90DEG
 γ Interval: 1.0DEG
 Test System: EVERFINE GO-2000B_V1 SYSTEM V2.0.362
 Humidity: 58%
 Test Distance: 5.850m [K=1.0000]
 Remarks:

ISOCANDELA DIAGRAM

Test:U:221.0V I:0.0440A P:4.222W PF:0.4338 Freq:60.08Hz Lamp Flux:162.033x1 lm		
NAME: Capetown SR-830-65°	TYPE: Recessed Ground Light	SERIAL No.:
SPEC.: 3000K	DIM.: L115mm*L115mm*H37mm	
MFR.: NEKO LIGHTING AG		



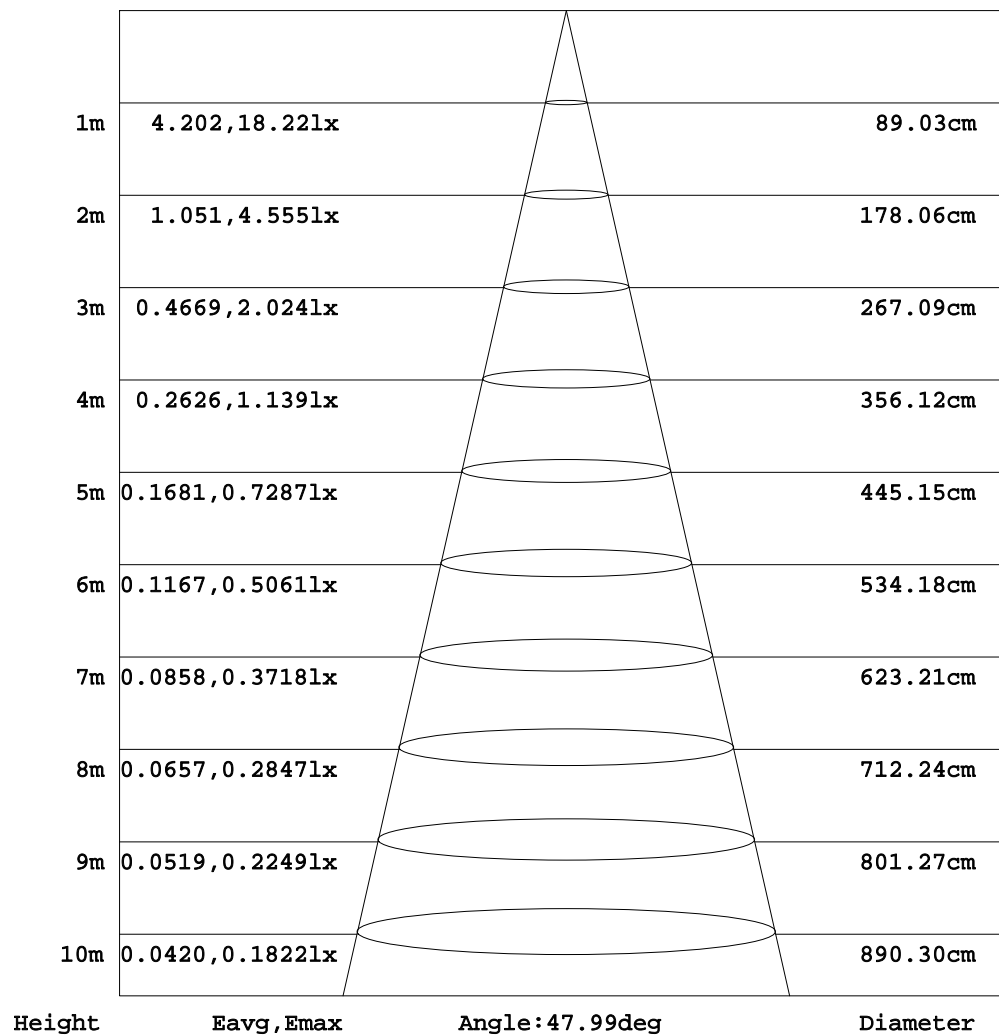
C Range: 0 - 360DEG
C Interval: 15.0DEG
Test Speed: HIGH
Temperature: 25.3DEG
Operators: Jason
Test Date: 2020-06-09

γ Range: 0 - 90DEG
γ Interval: 1.0DEG
Test System: EVERFINE GO-2000B_V1 SYSTEM V2.0.362
Humidity: 58%
Test Distance: 5.850m [K=1.0000]
Remarks:

AAI Figure

Test:U:221.0V I:0.0440A P:4.222W PF:0.4338 Freq:60.08Hz Lamp Flux:162.033x1 lm		
NAME: Capetown SR-830-65°	TYPE: Recessed Ground Light	SERIAL No.:
SPEC.: 3000K	DIM.: L115mm*L115mm*H37mm	
MFR.: NEKO LIGHTING AG		

Flux out: 2.617 lm



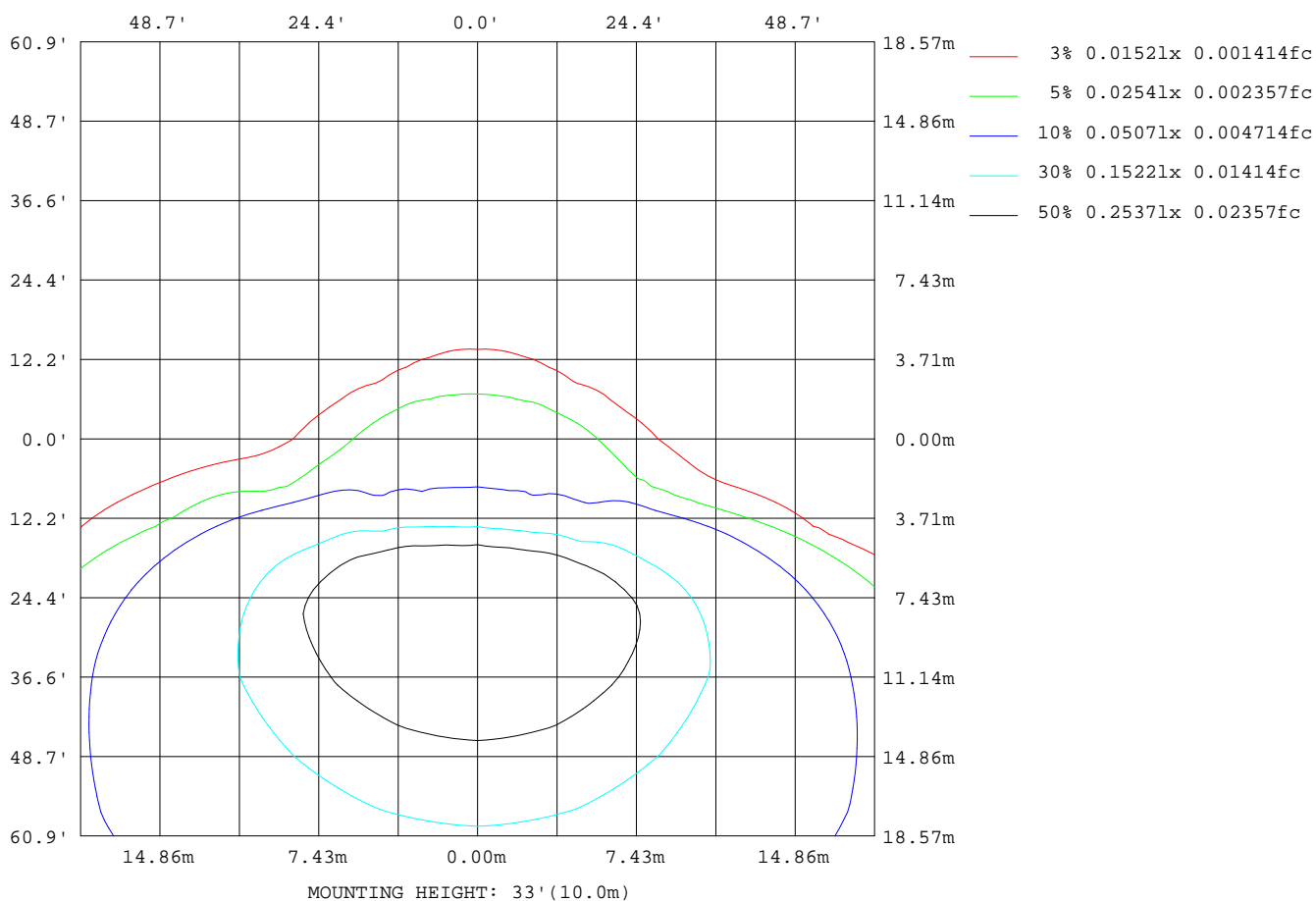
Note: The Curves indicate the illuminated area and the average illumination when the luminaire is at different distance.

C Range: 0 - 360DEG
C Interval: 15.0DEG
Test Speed: HIGH
Temperature: 25.3DEG
Operators: Jason
Test Date: 2020-06-09

γ Range: 0 - 90DEG
γ Interval: 1.0DEG
Test System: EVERFINE GO-2000B_V1 SYSTEM V2.0.362
Humidity: 58%
Test Distance: 5.850m [K=1.0000]
Remarks:

ISOLUX DIAGRAM

Test:U:221.0V I:0.0440A P:4.222W PF:0.4338 Freq:60.08Hz Lamp Flux:162.033x1 lm		
NAME: Capetown SR-830-65°	TYPE: Recessed Ground Light	SERIAL No.:
SPEC.: 3000K	DIM.: L115mm*L115mm*H37mm	
MFR.: NEKO LIGHTING AG		



C Range: 0 - 360DEG
C Interval: 15.0DEG
Test Speed: HIGH
Temperature: 25.3DEG
Operators: Jason
Test Date: 2020-06-09

γ Range: 0 - 90DEG
γ Interval: 1.0DEG
Test System: EVERFINE GO-2000B_V1 SYSTEM V2.0.362
Humidity: 58%
Test Distance: 5.850m [K=1.0000]
Remarks:

LED Avg.L Report

Test:U:221.0V I:0.0440A P:4.222W PF:0.4338 Freq:60.08Hz Lamp Flux:162.033x1 lm		
NAME: Capetown SR-830-65°	TYPE:Recessed Ground Light	SERIAL No.:
SPEC.:3000K	DIM.: L115mm*L115mm*H37mm	
MFR.: NEKO LIGHTING AG		

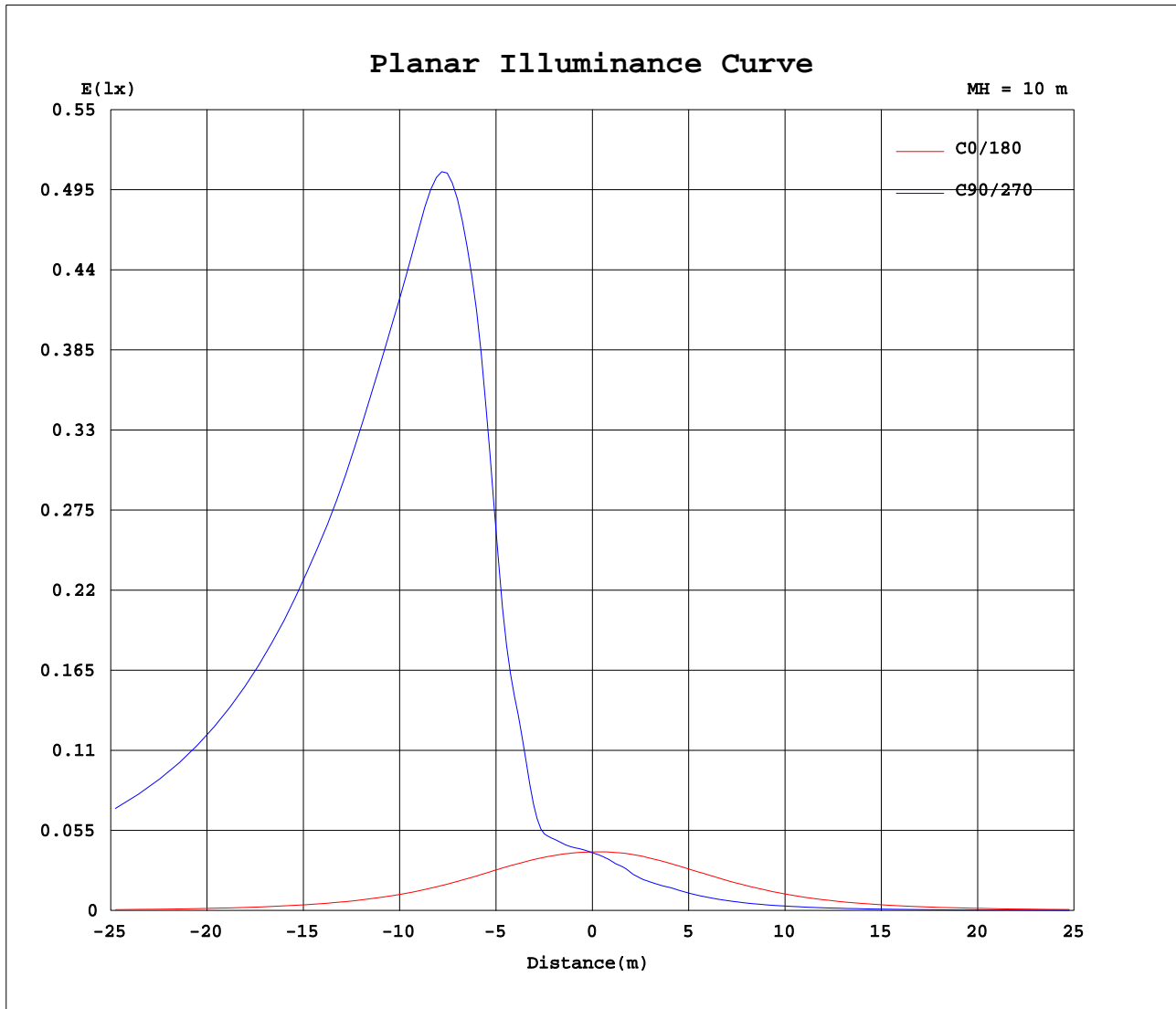
AvgL	cd/m2
L_0~180(65)av	277
L_0~180(75)av	194
L_0~180(85)av	155
L_90~270(65)av	12028
L_90~270(75)av	18612
L_90~270(85)av	269
L_45(65)av	8694
L_45(75)av	13137
L_45(85)av	619

Standard: GB/T 29293-2012

C Range: 0 - 360DEG
C Interval: 15.0DEG
Test Speed: HIGH
Temperature:25.3DEG
Operators:Jason
Test Date:2020-06-09

γ Range: 0 - 90DEG
γ Interval: 1.0DEG
Test System:EVERFINE GO-2000B_V1 SYSTEM V2.0.362
Humidity:58%
Test Distance:5.850m [K=1.0000]
Remarks:

Planar Illuminance Curve



C Range: 0 - 360DEG
C Interval: 15.0DEG
Test Speed: HIGH
Temperature: 25.3DEG
Operators: Jason
Test Date: 2020-06-09

γ Range: 0 - 90DEG
 γ Interval: 1.0DEG
Test System: EVERFINE GO-2000B_V1 SYSTEM V2.0.362
Humidity: 58%
Test Distance: 5.850m [K=1.0000]
Remarks:

```

γ Range: 0 - 90DEG
γ Interval: 1.0DEG
Test System:EVERFINE GO-2000B_V1 SYSTEM V2.0.362
Humidity:58%
Test Distance:5.850m [K=1.0000]
Remarks:

```

```

γ Range: 0 - 90DEG
γ Interval: 1.0DEG
Test System:EVERFINE GO-2000B_V1 SYSTEM V2.0.362
Humidity:58%
Test Distance:5.850m [K=1.0000]
Remarks:

```